

A stylized family tree with a white trunk and branches against a background of concentric blue circles. The tree is centered and fills most of the frame.

DEADLY STORY

Family Tree

Activity Book

This Family Tree belongs to

ABOUT YOU

This book is all about you, your family and your culture. You can use it to remember the people and places you are connected to where you fit, and the role you have in your family and community.

Use this space to draw and write about yourself. You can write your name, your mob, your favourite things or things you are proud of.

Write the names of or draw the people in your family.

FAMILY

Family is very important in Aboriginal peoples' lives. It connects us to our culture, country and ancestors. Family can be parents, carers, siblings, grandparents, aunties, uncles and cousins.

COMMUNITY

Your community are the people you connect to outside of our family that care about and support you. They can be Uncles, Aunties, friends, teachers or anyone else you trust.

Write the names of or draw the people in your community.



KINSHIP

Kinship looks different across communities and nations. It helps determine a person's relationship to others and to the universe and their responsibilities towards other people and Country. Your relationships with your family and community are important and help you understand where you fit in.

What kinds of relationships do you have with the people in your family and community? Who are the people that take care of you? Are there any people you take care of?

Do you know your totem(s)? Can you draw your totem below?

TOTEM

A totem is a natural object, plant or animal that is inherited by members of a Clan or family as their spiritual emblem. Clan groups have caretaking responsibilities for their totems. Totems define peoples' roles and responsibilities and their relationships with each other and creation.

In different Mobs, people are also able to choose their own Totem to care for and represent them.

Where is your country? What does your country look like?

COUNTRY

Country is very important to Aboriginal people. We take care of our Country and make sure it will be there for our future generations.

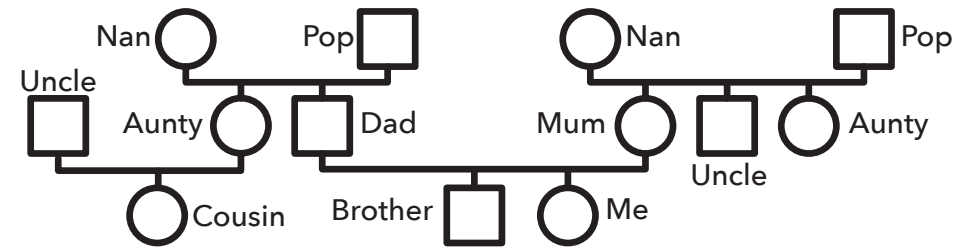
Your Country is usually where your Family or Mob are from, but it is also important to recognise the Country where you live too!

GENOGRAM

A genogram is a map of your family and your connections. This can be a helpful way to understand where you fit in and where you belong, but it can also be important to discover and learn about where you come from.

Genograms use symbols and lines to show all the different connections in your family.

This is what a genogram can look like.



You can make your own genogram using the Family Tree poster. You can find more ways of using symbols and lines to map out your family online, or make up your own.

INSTRUCTIONS

How to make your Family Tree.

You will need:

Scissors

Blu Tack

Glue or sticky tape

Pens or Textas

When you are finished the front of the book, fill in the shapes on the following pages using that information. When you are done, carefully cut out the different shapes and arrange them on the poster to make your Family Tree. You can use Blu Tack to start with, and when you're finished arranging them stick them down with glue or tape.

You can use the Genogram page, together with all your Totem, Country and Kinship shapes to show where you come from and all the ways you are connected to your family and community.

Write the names from the FAMILY page into the boxes below. Don't forget to include yourself!

10 empty rounded rectangular boxes for writing names, arranged vertically.

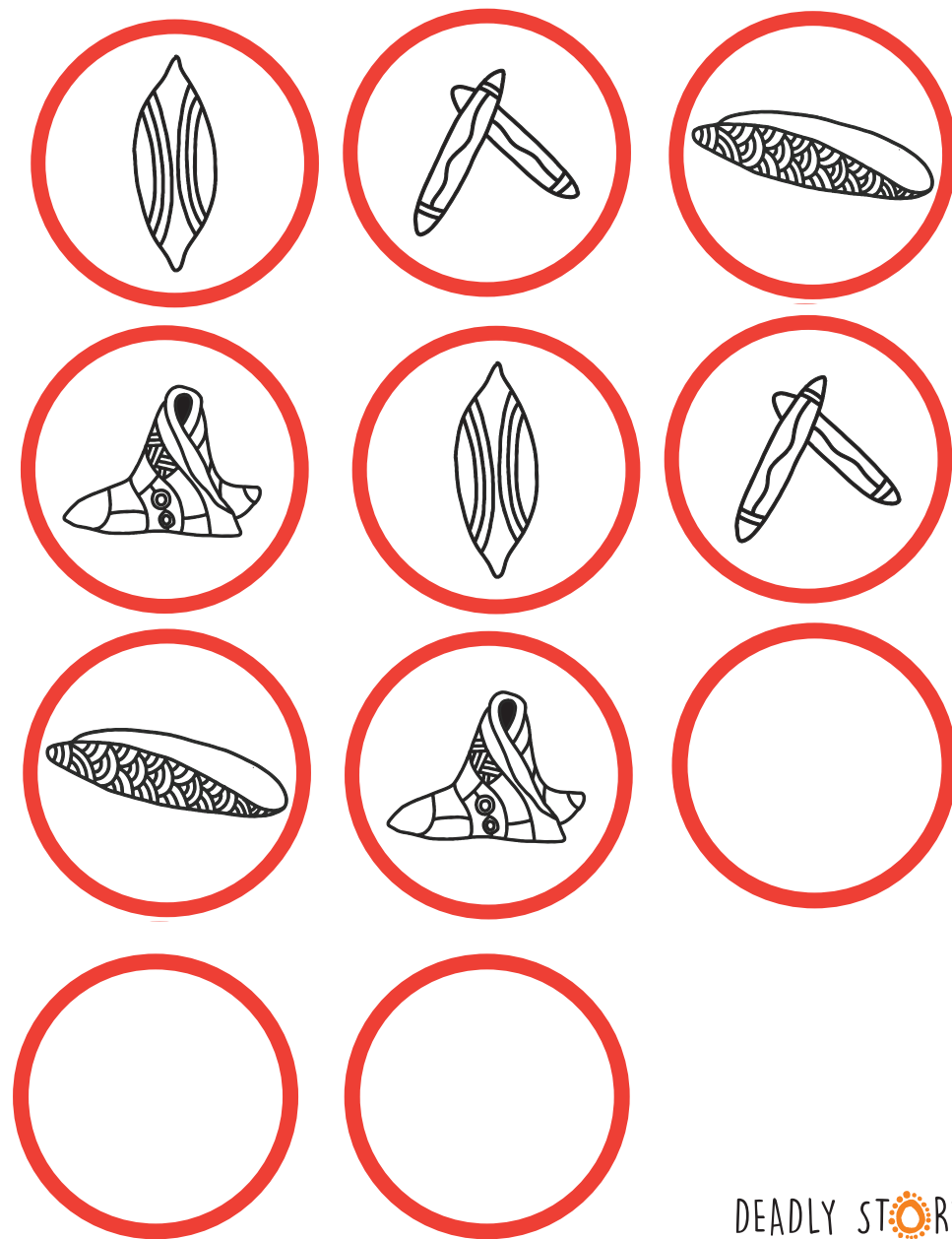
Write the names from your COMMUNITY page into the boxes below.

10 empty rounded rectangular boxes for writing names, arranged vertically.

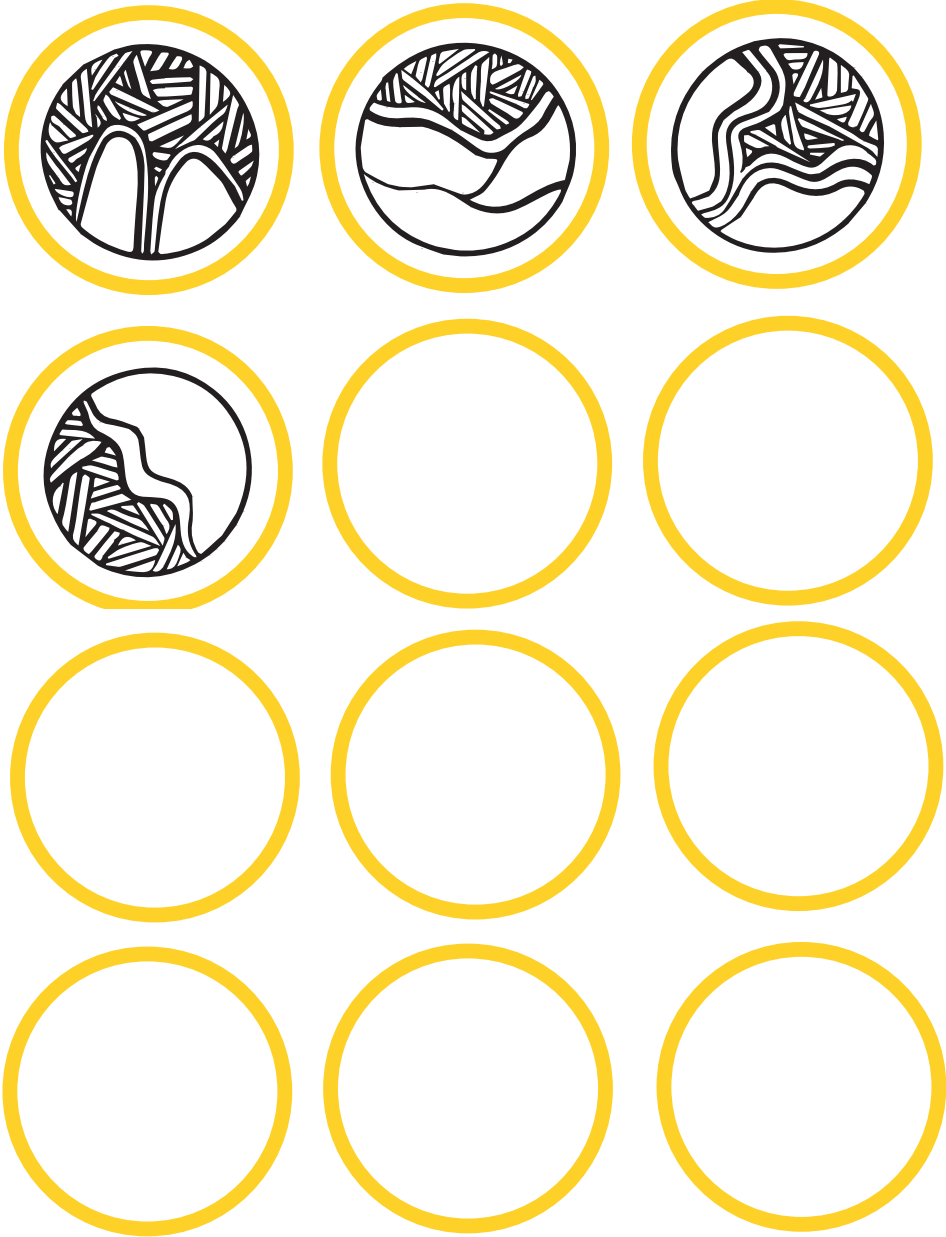
See if you can find your totem(s) below and colour them in, or draw your own!



You can use these shapes to show what kind of relationships you have with your family and community.



Use these shapes to represent your Country, or draw your own.



Use these shapes to write or draw and stick pictures onto, to decorate your Family Tree.



DEADLY STORY