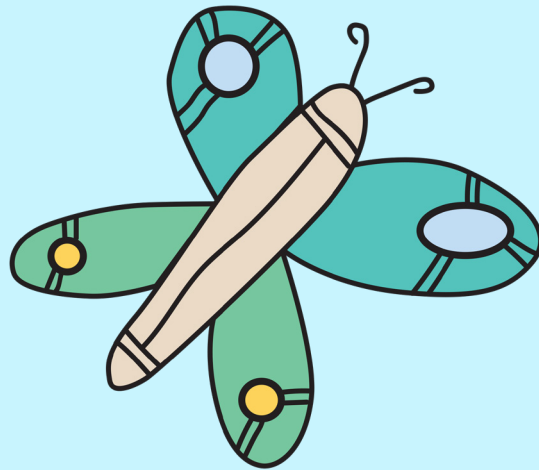


# LGBTQIA+ Referral List

Version: September 2022



**A collection of culturally safe services & resources to support & connect our LGBTQIA+ Mob.**

## *Categories*

- **Aboriginal & Torres Strait Islander**
- **Family Violence**
- **Housing**
- **Mental Health**
- **Alcohol & Other Drugs**
- **Social Connection**
- **Trans & Gender Diverse Health**



# LGBTQIA+ Referral List



## Aboriginal & Torres Strait Islander

ORGANISATION	CONTACT
<p><b>Black Rainbow</b></p> <p>The Black Rainbow is an advocacy platform and touchpoint for Aboriginal and Torres Strait Islander Lesbian, Gay, Bisexual, Queer, Transgender, and Intersex (LGBTQI) peoples. (Darwin based, providing national advocacy).</p>	<p>w: <a href="https://blackrainbow.org.au">https://blackrainbow.org.au</a></p>
<p><b>Koorie Pride Network</b></p> <p>The Koorie Pride Network connects and advocates for Aboriginal and/or Torres Strait Islander identifying lesbian, gay, bisexual, trans and gender diverse, intersex, queer and questioning, Sistergirls and Brotherboys. Private Facebook group as well for Aboriginal and Torres Strait Islander LGBTISBQ mob</p>	<p>w: <a href="https://www.kooriepridevic.org.au">https://www.kooriepridevic.org.au</a> fb: <a href="https://www.facebook.com/kooriepridevictoria/">https://www.facebook.com/kooriepridevictoria/</a></p>
<p><b>IndigiLez</b></p> <p>IndigiLez Leadership and Support Group formed in 2008 and has since become one of Queensland's prominent social support groups for Aboriginal and Torres Strait Islander lesbians and same sex attracted women. Online yarning circles run on a regular basis. (Queensland based, providing national advocacy)</p>	<p>w: <a href="https://www.yarnsheal.com.au/indigilez">https://www.yarnsheal.com.au/indigilez</a></p>
<p><b>Yarns Heal</b></p> <p>Suicide Prevention service – nationwide for Aboriginal and Torres Strait Islander LGBTISBQ community members. Support service for LGBTISBQ community members who are struggling – also provides referrals, (Queensland based, providing national advocacy)</p>	<p>w: <a href="https://www.yarnsheal.com.au">https://www.yarnsheal.com.au</a> e: <a href="mailto:info@yarnsheal.com.au">info@yarnsheal.com.au</a></p>
<p><b>Tiddas 4 Tiddas</b></p> <p>Tiddas 4 Tiddas is a podcast featuring candid conversations with Indigenous sisters, founded and is curated by Kamilaroi/Dunghutti sisters, Marlee and Keely Silva.</p>	<p>w: <a href="https://www.vacca.org/page/get-involved/cultural-hub/audio/tiddas-4-tiddas-podcast">https://www.vacca.org/page/get-involved/cultural-hub/audio/tiddas-4-tiddas-podcast</a></p>
<p><b>Strong Brother Strong Sister</b></p> <p>Community group that holds regular yarns and info sessions for young LGBTISBQ mob. Plenty of opportunity for young rainbow mob to connect and share experiences of being LGBTQI in a safe space. Also supporting LGBTISBQ – who are at risk of suicide, child protection intervention, experiencing FV, serious AOD problems. Ages 12- 25.</p>	<p>w: <a href="https://www.sbssf.org.au">https://www.sbssf.org.au</a> fb: <a href="https://www.facebook.com/strongbrotherstrongsister">https://www.facebook.com/strongbrotherstrongsister</a></p>
<p><b>Sistergirls &amp; Brotherboys</b></p> <p>Private Facebook groups predominantly for sistergirls, brotherboys, 2 spirit, trans and gender diverse Aboriginal and Torres Strait Islander community members.</p>	<p>fb: <a href="https://www.facebook.com/groups/sistergirls.brotherboys">https://www.facebook.com/groups/sistergirls.brotherboys</a></p>
<p><b>LGBTQIA+</b></p> <p>Private Facebook groups predominantly for sistergirls, brotherboys, 2 spirit, trans and gender diverse Aboriginal and Torres Strait Islander community members.</p>	<p>fb: There are many inclusive Facebook groups for our LGBTQIA+ Community. Search online to find a group for you. Here's a list to get you started - follow the link. <a href="#">LGBTQIA Facebook Group List</a></p>
<p><b>BlaQ</b></p> <p>BlaQ was established as a collective response to the identified need for strengthened visibility of the Aboriginal and Torres Strait Islander LGBTQ+ community.</p>	<p>fb: <a href="https://www.facebook.com/blaqmobs/">https://www.facebook.com/blaqmobs/</a></p>
<p><b>Queensland Aids Council</b></p> <p>2 Spirits program provides: One-on-one support, Links and referrals to Aboriginal and Torres Strait Islander LGBTQI+ Sistergirl &amp; Brotherboy peer support groups, Advocacy for Aboriginal and Torres Strait Islanders who identify as Lesbian, Gay, Bisexual, Transgender, Intersex, Queer, Sistergirl and Brotherboy, Referrals to appropriate Aboriginal and Torres Strait Islander and LGBTQI+ services</p>	<p>w: <a href="https://quac.org.au/programs/2-%20spirits/">https://quac.org.au/programs/2-%20spirits/</a></p>





## Aboriginal & Torres Strait Islander (cont.)

ORGANISATION	CONTACT
<p><b>National Indigenous Critical Response Team</b> National crisis telephone line that is LGBTISBQ safe.</p>	<p>p: 1800 805 801</p>
<p><b>Victorian Aboriginal Legal Service</b> Specialist family violence and criminal law solicitors can provide advice on all legal matters. ***Best to contact VALS – duty lawyers and independent children’s lawyers are usually unhelpful and ineffective advocates.</p>	<p>p: 1800 064 865 w: <a href="https://www.vals.org.au">https://www.vals.org.au</a></p>

## Family Violence

ORGANISATION	CONTACT
<p><b>Anglicare Victoria</b> Has the Rainbow Tick Range of family violence services, programs, and supports. Case management (in home and outreach), counselling, Men’s behaviour change program, Child FIRST program. LGBTIQ inclusive.)</p>	<p>p: 1800 809 722 w: <a href="https://www.anglicarevic.org.au/our-services/">https://www.anglicarevic.org.au/our-services/</a></p>
<p><b>Merri Community Health</b> Has the Rainbow Tick and can provide LGBTIQ+ Family Violence Support. Merri Health also provide Aboriginal &amp; Torres Strait Islander support which can be accessed via their website.</p>	<p>p: 1300 637 744 w: <a href="https://www.merrihealth.org.au">https://www.merrihealth.org.au</a></p>
<p><b>Berry Street</b> Working towards Rainbow Tick LGBTIQ inclusive services advertised on their website. Full range of specialist family violence services, supports, program and secondary referrals – including LGBTIQ.</p>	<p>p: 03 9429 9266 w: <a href="https://www.berrystreet.org.au">https://www.berrystreet.org.au</a></p>
<p><b>Eastern Domestic Violence Service</b> Has the Rainbow Tick Full range of housing, family violence, counselling, court support programs and services</p>	<p>p: 03 9259 4200 w: <a href="https://www.edvos.org.au">https://www.edvos.org.au</a></p>
<p><b>WRISC: Family Violence Support Ballarat</b> Has the Rainbow Tick Full range of family violence support including court support, case management, housing assistance, advocacy, counselling, and active referrals to legal services. Also has a designated Aboriginal and Torres Strait Islander program that includes support for primary school age and high school age children. Same services as offered above. Aboriginal women run this service, and it also works with youth perpetrators of violence. Has a partnership with BADAC.</p>	<p>p: (03) 5333 3666 w: <a href="https://www.wrisc.org.au">https://www.wrisc.org.au</a></p>
<p><b>Thorne Harbour Health</b> Flexible support packages: designed to provide limited financial assistance to victims/survivors of family violence within LGBTI communities.</p>	<p>p: 1800 134 840 ((ask for Duty Worker or the Family Violence Team) w: <a href="https://thorneharbour.org">https://thorneharbour.org</a></p>
<p><b>Victoria Police</b> Gay and Lesbian Liaison Officers (GLLOs): these are located at various police stations throughout Victoria. They are specially trained police officers who support members of LGBTIQ+ community.</p>	<p>p: 9247 6944 to find out local GLLO</p>
<p><b>Neighbourhood Justice Centre</b> LGBTI support workers: LGBTI applicant and respondent workers located at the NJC supporting LGBTI people through the intervention order process.</p>	<p>p: (03) 9948 8777 w: <a href="https://www.neighbourhoodjustice.vic.gov.au">https://www.neighbourhoodjustice.vic.gov.au</a></p>



## Family Violence (cont.)

ORGANISATION	CONTACT
<p><b>Switchboard Victoria</b> Provides peer support, telephone counselling, webchat, and referrals to LGBTISBQA community – for FV, housing, mental health, sexual health, transition, bullying etc.</p>	<p>p: (03) 9663 2474 w: <a href="https://www.switchboard.org.au">https://www.switchboard.org.au</a></p>
<p><b>Rainbow Door</b> Provides short term case management and counselling for LGBTISBQ community affected by family violence and/or intimate partner violence, while individual is waiting for a place at the service of their choice. Family violence, housing support, AOD.</p>	<p>p: 1800 729 367 w: <a href="https://www.rainbowdoor.org.au">https://www.rainbowdoor.org.au</a></p>
<p><b>QLife</b> QLife provides Australia-wide anonymous, LGBTI peer support and referral for people wanting to talk about a range of issues including sexuality, identity, gender, bodies, feelings or relationships.</p>	<p>p: 1800 184 527 w: <a href="https://qlife.org.au">https://qlife.org.au</a></p>
<p><b>With Respect</b> Support and referral pathways for LGBTISBQA AFMs and family and friends of LGBTISBQA AFMs who have been affected by family violence (from family of origin, family of choice, or extended family) or intimate partner violence.</p>	<p>p: 1800 542 847 w: <a href="https://www.withrespect.org.au">https://www.withrespect.org.au</a></p>
<p><b>Family Access Network</b> Has the Rainbow Tick LGBTIQ (15– 25-year-old) therapeutic support group for victim/survivors of family violence and intimate partner violence.</p>	<p>p: (03) 9890 2673 w: <a href="https://www.fan.org.au">https://www.fan.org.au</a></p>
<p><b>LGBTISBQ Legal Service</b> Provides legal advice for all LGBTISBQ community with a new focus on trans and gender diverse community members. They do family, criminal and also anti-discrimination law. Also assist with change of name – birth certificates and other identity documents.</p>	<p>p: 1800 805 801 w: <a href="https://lgbtiqlegal.org.au">https://lgbtiqlegal.org.au</a></p>

## Housing

ORGANISATION	CONTACT
<p><b>Anglicare</b> Has the Rainbow Tick. Crisis accommodation for young people 16-22, kinship care. LGBTIQ. Lead tenant mentoring program.</p>	<p>p: 1800 809 722 w: <a href="https://www.anglicarevic.org.au/contact-us/">https://www.anglicarevic.org.au/contact-us/</a></p>
<p><b>Family Access Network</b> Has the Rainbow Tick Family Access Network: has 2 transitional properties for LGBTI young people aged 15- 25 who are experiencing or at risk of homelessness. They also have a weekly support group for LGBTI youth.</p>	<p>p: (03) 9890 2673 w: <a href="https://www.fan.org.au">https://www.fan.org.au</a></p>
<p><b>VincentCare</b> Has the Rainbow Tick Housing: crisis, transitional and social available. Tailored support services for FV and AOD as well for LGBTISBQ and Aboriginal and Torres Strait community.</p>	<p>p: 1800 825 955 w: <a href="https://vincentcare.org.au">https://vincentcare.org.au</a></p>
<p><b>NEAMI</b> Working towards Rainbow Tick. Advertises as LGBTIQ inclusive. Towards home Program. Intensive, specialist, trauma- informed support, and accommodation.</p>	<p>p: (03) 8691 5300 w: <a href="https://www.neaminational.org.au">https://www.neaminational.org.au</a></p>
<p><b>Wombat – LGBTI Homelessness and FV program</b> FV and Homelessness supports that are LGBTIQ inclusive.</p>	<p>w: <a href="https://www.wombat.org.au/what-we-do/lgbti-homelessness-family-violence-project">https://www.wombat.org.au/what-we-do/lgbti-homelessness-family-violence-project</a></p>





## Mental Health

ORGANISATION	CONTACT
<p><b>Queerspace</b> Family violence, Individual, relationship and whole-of-family counselling, parenting support, youth counselling , group programs, peer support, mentoring and social activities for the LGBTIQ community.</p>	<p>p: (03) 9663 6733 w: <a href="https://www.queerspace.org.au">https://www.queerspace.org.au</a></p>
<p><b>Switchboard Victoria</b> Provides peer support, telephone counselling, webchat, and referrals to LGBTISBQA community – for FV, housing, mental health, sexual health, transition, bullying etc.</p>	<p>p: (03) 9663 2474 w: <a href="https://www.switchboard.org.au">https://www.switchboard.org.au</a></p>
<p><b>Headspace</b> Telephone counselling and confidential online chats for young people aged 12-25. LGBTIQ and Aboriginal and Torres Strait Islander inclusive. Also, headspace counselling and case management available at centres all across Vic.</p>	<p>w: <a href="https://headspace.org.au">https://headspace.org.au</a></p>
<p><b>NEAMI</b> Community based mental health support. Outreach programs – holistic. Suicide prevention programs. LGBTIQ inclusive – working towards Rainbow Tick.</p>	<p>p: (03) 8691 5300 w: <a href="https://www.neaminational.org.au">https://www.neaminational.org.au</a></p>
<p><b>Merri Health Services</b> Has Rainbow Tick Counselling and a drop- in service for information, assessment.</p>	<p>p: 1300 637 744 w: <a href="https://www.merrihealth.org.au/services/mental-health/drop-in-support/">https://www.merrihealth.org.au/services/mental-health/drop-in-support/</a></p>
<p><b>Thorne Harbour</b> Fearless Program: Therapeutic group for members of the LGBTIQ community who feel impacted by homophobia. Covers a range of topics including coming out, self-esteem, sex, relationships, community and future planning. <i>(Gold coin donation for healthcar e card holders)</i></p>	<p>p: (03) 9865 6700 w: <a href="https://thorneharbour.org">https://thorneharbour.org</a></p>
<p><b>Thorne Harbour</b> Counselling for those who are LGBTIQ, affected by HIV or at risk of HIV. <i>(Gold coin donation for healthcar e card holders)</i></p>	<p>p: (03) 9865 6700 w: <a href="https://thorneharbour.org">https://thorneharbour.org</a></p>
<p><b>Anxiety Recovery Centre of Victoria (ARCVic)</b> Self-help &amp; support group: for lesbian, gay male, transgender, intersex (LGBTI) &amp; gender fluid people with anxiety disorders and their families and carers.</p>	<p>p: 1300 269 438 w: <a href="https://www.arcvic.org.au">https://www.arcvic.org.au</a></p>
<p><b>MIND</b> Has the Rainbow Tick. Assertive outreach, community mental health services, NDIS, housing support</p>	<p>p: 1300 286 463 w: <a href="https://www.mindaustralia.org.au">https://www.mindaustralia.org.au</a></p>
<p><b>MIND Equality Centre</b> Specialist psychological services for sexually and gender diverse people. Services include occupational therapy; individual, couples, group, and family relationship counselling ; and sex therapy. Practitioners identify as members of the LGBTQI community. <i>(Fees vary according to the practitioner's specialty. Subsidised counselling available if eligible.)</i></p>	<p>p: 1300 286 463 w: <a href="https://www.mindaustralia.org.au/aftercare">https://www.mindaustralia.org.au/aftercare</a></p>
<p><b>Safe Place Therapy</b> Safe Place Therapy counsellors are experienced in working with many different people who identify as LGBTI. <i>(Low-cost options and Medicare rebated sessions.)</i></p>	<p>p: 0411 791 089 w: <a href="https://www.safeplacetherapy.com.au">https://www.safeplacetherapy.com.au</a></p>





## Alcohol & Other Drugs

ORGANISATION	CONTACT
<p><b>Turning Point</b> LGBTIQ Inclusive Short stay rehab, Inpatient detox, counselling, psychotherapy, group programs, telephone and online counselling, specialist addiction clinics.</p>	<p>p: 1800 888 236 w: <a href="https://www.turningpoint.org.au">https://www.turningpoint.org.au</a></p>
<p><b>Thorne Harbour Health</b> Has the Rainbow Tick Drink Limits: Therapeutic group program looking at alcohol use and anxiety for Lesbian, Bisexual and Queer women, gender diverse and non-binary people.</p>	<p>p: (03) 9865 6700 w: <a href="https://thorneharbour.org">https://thorneharbour.org</a></p>
<p><b>Merri Health Services</b> Queer Youth Withdrawal Program: A drug and alcohol withdrawal program specifically for LGBTIQ+ people aged between 12 and 21.</p>	<p>p: 1300 637 744 w: <a href="https://www.merrihealth.org.au/services/young-adults/">https://www.merrihealth.org.au/services/young-adults/</a></p>

## Social Connection

ORGANISATION	CONTACT
<p><b>Pride Centre</b> Pride Centre Directory Full list of all groups offering social connection and engagement for LGBTISBQA community.</p>	<p>w: <a href="https://pridecentre.org.au/resource-directory/?sfm_main_category=Social%20Connection">https://pridecentre.org.au/resource-directory/?sfm_main_category=Social%20Connection</a></p>
<p><b>YGender</b> Social events for transgender and gender diverse young people (25 and under).</p>	<p>e: <a href="mailto:info@ygender.org.au">info@ygender.org.au</a> w: <a href="https://www.rainbownetwork.com.au/directory/y-gender">https://www.rainbownetwork.com.au/directory/y-gender</a></p>
<p><b>Minus 18</b> Youth-led LGBTI organisation that provides social events such as queer formals and dance nights. Events are usually for those under the age of 21 and focus on social inclusion.</p>	<p>w: <a href="https://www.minus18.org.au">https://www.minus18.org.au</a></p>
<p><b>Box Hill Eastern Diversity Group</b> EDG is a support/social group for anyone aged 15-25 who identify as LGBTIQ or gender diverse or are just not sure.</p>	<p>p: (03) 9890 2673 w: <a href="https://www.fan.org.au">https://www.fan.org.au</a></p>

## Trans & Gender Diverse Health

ORGANISATION	CONTACT
<p><b>Victorian Trans &amp; Gender Diverse Community Health Service</b> Government funded initiative to increase health services across Vic for trans, gender diverse and non-binary people aged 18 and over. Services provided: Peer Navigation, GP services, Access to hormone therapy, Endocrinology, Mental health support and counselling, Referral to social and peer support groups, Referral to specialists, Access to allied health, dental, physiotherapy, podiatry and more.</p>	<p>p (Preston): (03) 8470 1111 p (Ballarat): (03) 5338 4500 w: <a href="https://www.yourch.org.au/service-access/trans-and-gender-diverse-health/">https://www.yourch.org.au/service-access/trans-and-gender-diverse-health/</a></p>

